

SERIES KT 12

SINGLE STAGE, HIGH FLOW, HIGH PRESSURE REGULATOR



- ◆ 6,000 psig inlet (414 bar)
5 to 2,500 psig outlet
(0.35 to 172 bar)
- ◆ Stainless steel or brass construction
- ◆ Self relieving and non-relieving versions*
- ◆ Machined from bar stock
- ◆ Field repairable
- ◆ Fine adjustment control
- ◆ Piston sensing element
- ◆ High flow, 0.8 C_v
Higher flow, HF option, 2.0 C_v
- ◆ High flow with high delivery pressure
- ◆ Balanced poppet design

*Self relieving model vents pressure above set point automatically for ease of pressure adjustment and for added safety. Non-relieving model does not vent.

ENGINEERING DATA

Operating Parameters

Source pressure	
SS body	6,000 psig (414 bar)
Brass body	5,000 psig (345 bar)
Delivery pressure	5 to 300 psig (0.35 to 21 bar)
	5 to 600 psig (0.35 to 41 bar)
	10 to 1,000 psig (0.7 to 69 bar)
	15 to 1,500 psig (1.0 to 103 bar)
	25 to 2,500 psig (1.7 to 172 bar)
Design proof pressure	150% of maximum rating
Design burst pressure	400% of maximum rating

Other Parameters

Inlet/outlet ports	1/2" and 3/4" NPT (options available)
Flow coefficient C _v	0.8 (opt HF 2.0)
C _v vent valve	0.06 (self relieving option only)
Operating temperature	-40 to +160F (-40 to +71C)
Leak rate	Bubble tight
Self relieving*	Standard, non-relieving optional (must be specified)
Shipping weight (approx.)	8 lb (3.6 kg)

MATERIALS OF CONSTRUCTION

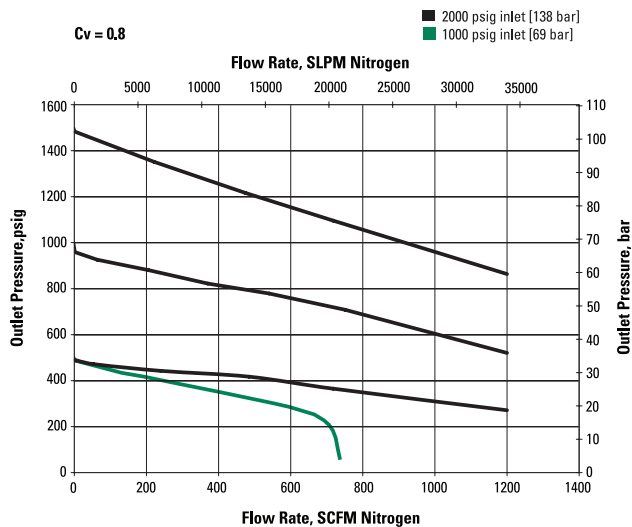
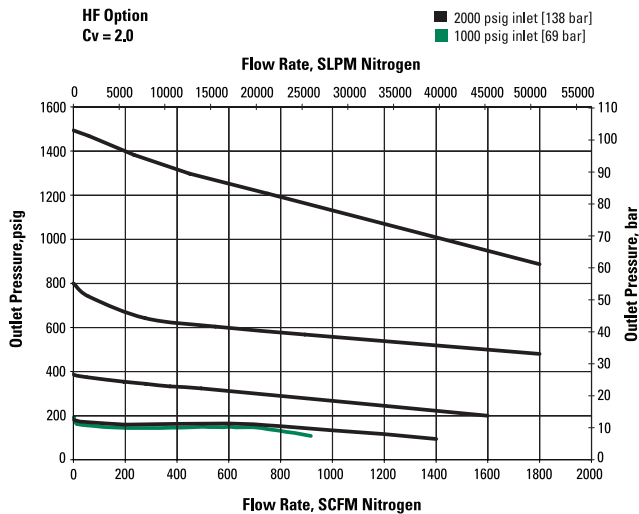
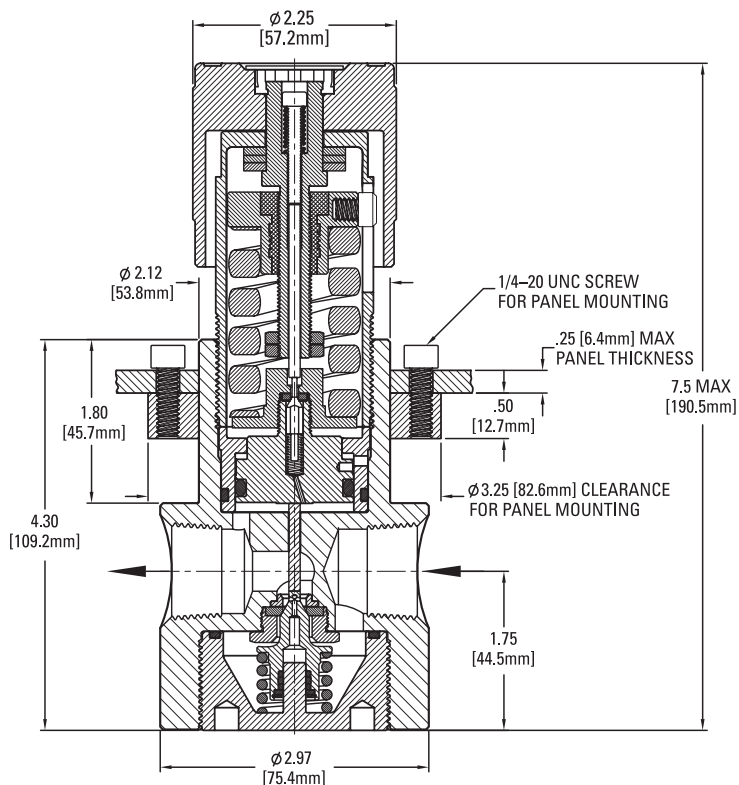
Body	KT 12C
Piston and trim	SS, 300 series
Seat, main valve	SS, 300 series
Seat, vent valve	PCTFE
O-rings	PCTFE
Rings, back up	Viton®
	PTFE

KT 12B
Brass
SS, 300 series
PCTFE
PCTFE
PCTFE
Viton
PTFE

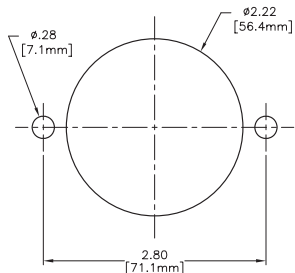
All specifications subject to change without notice.

Viton® DuPont

SERIES KT 12 — QUALITY, RELIABILITY & PERFORMANCE!

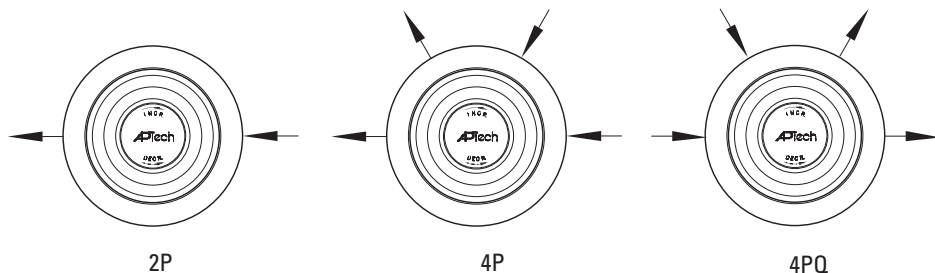


Panel Installations



Panel mount cut out dimension

Porting



ORDERING INFORMATION

KT 12 Series	J Pressure Range	1 Relieving Non-Relieving	C Material	4P Ports	8 Connection (Inlet/Outlet)	60 20 Gauge Source Delivery	P Options
KT 12E = 5-300 psig (0.35 to 21 bar)				2P = 2 ports	8 = 1/2 inch NPT	0 = No gauge	P = Panel installation
KT 12G = 5-600 psig (0.35 to 41 bar)				4P = 4 ports	12 = 3/4 inch NPT	4 = 400 psig/bar	HF = High flow
KT 12I = 10-1,000 psig (0.7 to 69 bar)				4PQ = 4 ports		6 = 600 psig/bar	
KT 12J = 15-1,500 psig (1.0 to 103 bar)						10 = 1,000 psig/bar	
KT 12L = 25-2,500 psig (1.7 to 172 bar)						20 = 2,000 psig/bar	
						40 = 4,000 psig/bar	
						60 = 6,000 psig/bar	
						Gauge ports are 1/4 inch female NPT.	